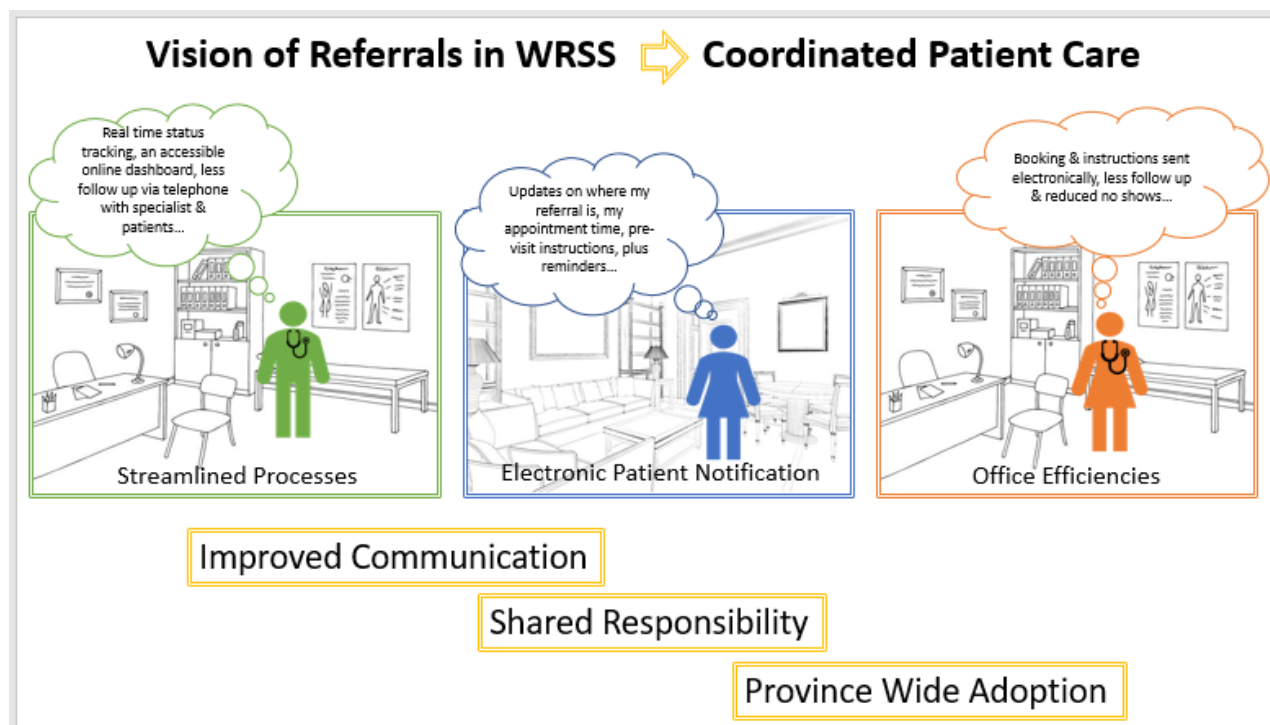


1. **Update on Digital Strategy** – Corrie Barclay (MoH, Assist. Deputy Minister, Health Sector IM/IT), Dr. Douglas Kingsford (Chief Information Officer & Executive Medical Director, Interior Health)
 - An overview of the *Provincial Digital Health Strategy*, and the one-day stakeholder engagement workshop on September 7th, 2018 was provided.
 - The goal of the workshop was to inform the creation of a Provincial Digital Health Strategy that meets the needs of community-based clinical practices. Feedback on the draft strategy will be sought from stakeholders in early October 2018, for review by the Leadership Council on October 18, 2018.
 - Questions and suggestions focused on availability of resources, incentives and appropriate skill sets to effectively facilitate change, and a clear articulation of the vision, process, deliverables and timeline. Also the inclusion of patients and families in the plan.

2. **Presentation: Patient Referrals Through Pathways – Pathways in partnership with White Rock/Surrey Division of Family Practice** (Cary Sheppard (Project Lead, Ryan Lammertsen (ED, Pathways), Drs. Tracy Monk, Susan Lee (GPs), James Rudnik (Internist)
 - A presentation provided an overview of the process of improving the referral process in White Rock South Surrey with the development of a GP/Specialist Physician electronic patient referral system built into the Pathways platform.
 - The project started in February 2017 with four GPs, four Specialists and five MOAs' coming together to develop a clear picture of the challenges, and to commit to working together to come up with solutions.
 - A meeting in September 2017, led to the decision to create an electronic referral & patient notification system collaboratively, so that no one party bore the burden of the process.
 - In December of 2017, 18 GP clinics and 24 Specialists' offices were visited to obtain further feedback and to share top recommendations from the September meeting. The team then partnered with Pathways to develop the solution. The team stressed the importance of the collegiality and collaboration between GPs and specialists as foundational for success of the project to date.
 - Pilot testing is expected to begin October 2018.



3. Shared Care Learning Centre – Adoptability Profiles – Gary Sveinson, SC Liaison

- Gary provided an update on the Shared Care Spread and Sustainability Learning Centre [website](#), and how spread and sustainability best practices have been incorporated into the site.
- Ongoing work includes the development of 5-6 project adoptability profiles with potential for spread which will be included on the site to help inform other communities considering similar projects.
- Potential profiles will first be brought to the committee for review, discussion and approval. The goal is to ensure that upcoming proposals for new and innovative models of shared care include development of a spread and sustainability profile at the beginning of their project.
- Resources available on the Learning Centre website include a readiness assessment tool (re implementation of a Shared Care model), budget development tool, and library of available external resources/supports.
- It was suggested that details of critical success factors and what to avoid should be included on adoptability profiles, and that the profiles be shared with GPSC and SSC to avoid duplication, and to provide opportunities to link to the Learning Centre from other project data sources where appropriate.

